

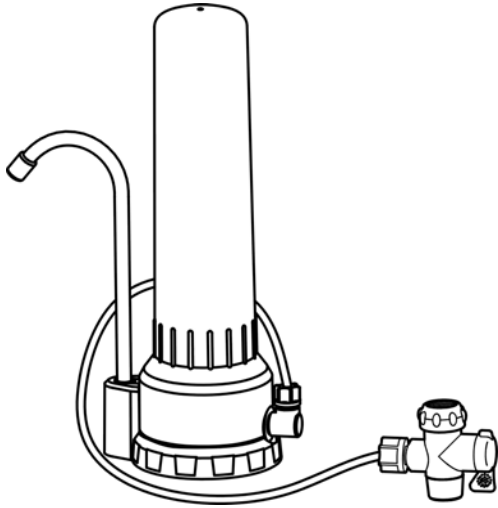


Countertop Water Purifier

(Model: HF111)

Replacement Cartridge

(Model: CF111)



Owner's Manual

GUANGZHOU PUREEASY HI-TECH CO., LTD

Rm 501, 5/F, Information Building, No.111 Science Road,
Science City, Guangzhou, China PC.:510633
TEL: +86-20-32058578 FAX: +86-20-32068635
Email: sales@pureeasy.com Web: www.pureeasy.com

Thank you for choosing PUREEASY patent product. We are confident that you will be satisfied with your PUREEASY Countertop Water Purifier and that it will give you excellent service. To ensure that you will get the best results from your water purifier, please follow the instructions carefully, especially before fitting the PUREEASY Countertop Water Purifier to your tap.

PUREEASY Countertop Water Purifier can 99.9999% remove bacteria in water like Escherichia coli, Staphylococcus aureus, Salmonella typhi, Vibrio cholerae, Legionella pneumophila and entirely remove parasites, rusts and other suspended contaminants with unique 0.1 μ m dual ceramic membranes cartridge. The new water purification media of nano-metal clusters used can efficiently remove residual chlorine and soluble heavy metal ions in water. Activated carbon can reduce unpleasant tastes and odors efficiently. Micro-organisms growth and reproduction can be inhibited during the using period. Using PUREEASY Countertop Water Purifier, you can get clean, safe and healthy drinkable water keeping minerals and microelements in the water.

The PUREEASY Countertop Water Purifier has separate outlets for purified and regular water. The ceramic cartridge is cleanable and replaceable.

Key Components

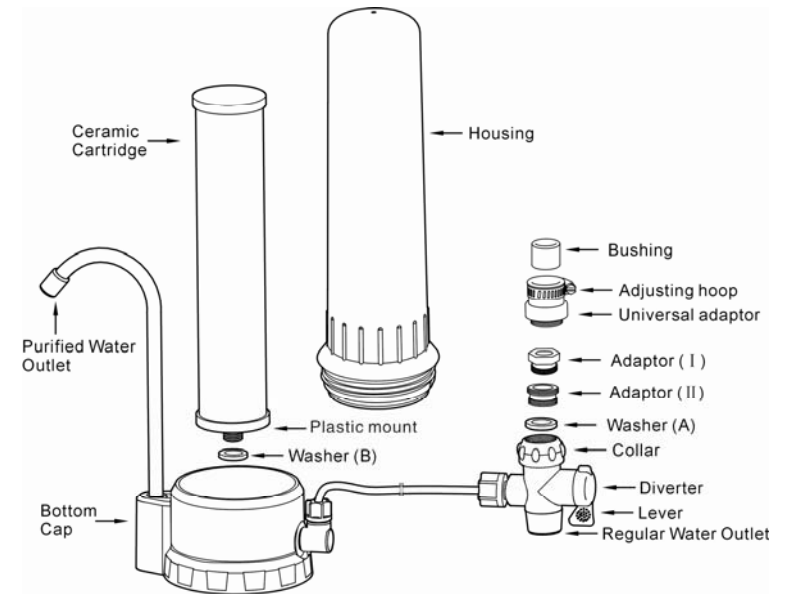


Fig. 1

Technical Specification

Output:	4L/min (at water pressure of 2 bar)
Cartridge Capacity:	Approx. 10,000 liters (depending on water quality)
Working Pressure:	0.1~0.4MPa
Working Temperature	5~45 $^{\circ}$ C
Weight:	Approx. 840g
Dimensions:	13.8 x 10.1 x 32cm
Material:	Ceramic, Nano-metal clusters (Nano-KDF) media, Activated carbon, Plastic

Installation of the PUREEASY Countertop Water Purifier

Install the cartridge at the first use (Fig. 2).

- 1) Screw off (counter-clockwise) the housing.
- 2) Remove the ceramic cartridge (inside the package) from the housing.
- 3) Remove the ceramic cartridge from package. Make sure that the original washer (B) is positioned correctly.
- 4) Screw the ceramic cartridge onto the bottom cap.
- 5) Reassemble the housing.

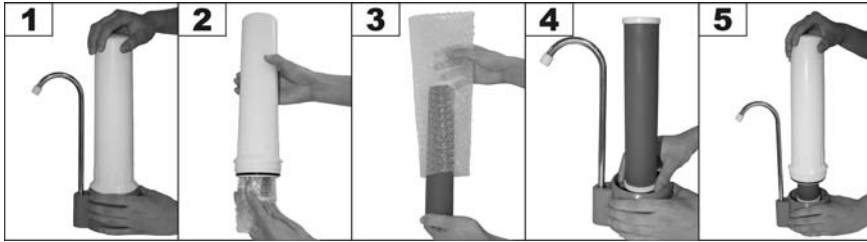


Fig. 2

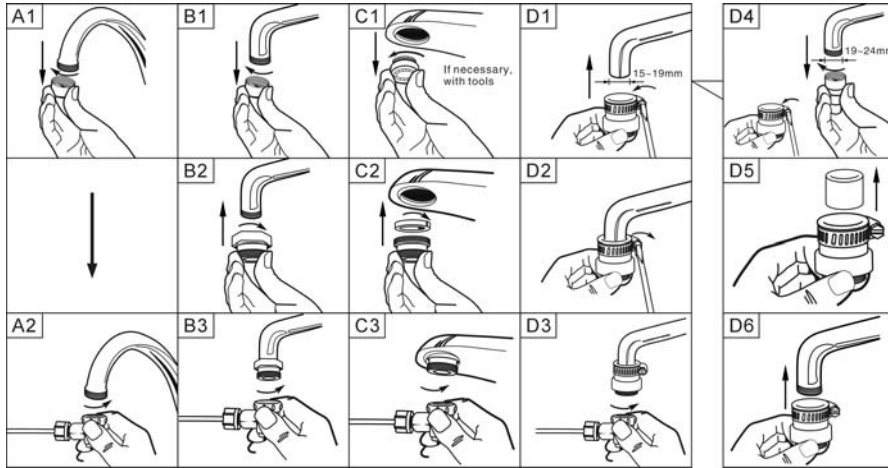


Fig. 3

Attention:

Before you install the water purifier, please determine which type of tap you have (type A, B, C or D).

A – Tap with external thread (A) (Figs. 3: A1–A2)



- (1) Remove the existing aerator from the tap.
- (2) If you have a standard tap, screw the collar directly to the tap.

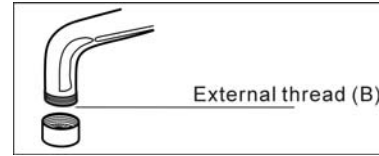
Attention:

◆ The thread of collar is plastic, when fitting collar on the tap, ensure the thread of the collar is properly

connected to the thread of your tap. Do not use any tools when attaching the collar to the tap. Hand tighten only.

◆ Some tap with external thread maybe special, please use the additional universal adaptor.

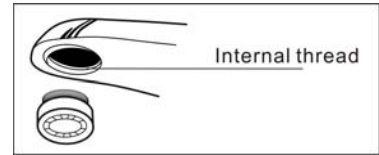
B – Tap with external thread (B) (Figs. 3: B1–B3)



- (1) Remove the existing aerator from the tap.
- (2) Screw the adaptor (I) to the tap and then attach the collar to the adaptor (I), ensure that the additional washer is installed at the top of the adaptor (I).

Attention: Do not use any tools when attaching the collar to the tap. Hand tighten only.

C – Tap with internal thread (Figs. 3: C1–C3)

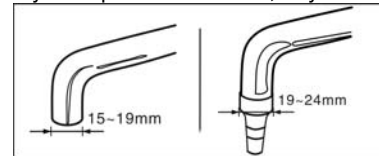


- (1) Remove the existing aerator from the tap, if necessary, with tools.
- (2) Screw the adaptor (II) to the tap and then attach the collar to the adaptor (II), ensure that the additional washer is installed at the top of the adaptor (II).

Attention: Do not use any tools when attaching the collar to the tap. Hand tighten only.

D – Tap without thread or you don't have a standard tap (Figs. 3: D1–D6)

If your tap has no threads, or you don't have a standard tap, use the additional universal adaptor.



How to attach the universal adaptor to the tap:

- (1) Loosen the screw of the adjusting hoop with a screwdriver as much as necessary to fit the diameter of your tap.

Attention:

Determine if you need take out the bushing of the universal adaptor according to the diameter of your tap: do not need take out between 15–19mm, take out between 19–24mm (see figs. 3: D1, D4)

- (2) Fit the adaptor on your tap.
- (3) Tighten the adjusting hoop with a screwdriver.
- (4) Attach the collar to the adaptor and tighten it. Do not use tools to tighten the collar!

Attention:

Do not use any tools when attaching the collar to the tap. Hand tighten only. A screwdriver is required only for fixing the universal adaptor to the tap.

Using the PUREEASY Countertop Water Purifier

Step 1:

The PUREEASY Countertop Water Purifier has separate outlets for purified and regular water. When the

diverter lever is vertical, the water will come directly out of the regular port (see Fig. 4A)

To get purified water, move the lever in horizontal position, purified water will come out of the purified port (see Fig. 4B)

Attention:

- ◆ **The ceramic cartridge is filled with Nano–metal clusters (Nano–KDF) media and activated carbon. It is normal for carbon dust to appear in filtrated water at the first use and does not influence the performance of your water purifier. Run the purifier for 5 minutes to flush out any materials residue. Please repeat this process with every new cartridge. Either use the purified water for your plants or discard it.**
- ◆ **If the PUREEASY Countertop Water Purifier has not been used for more than 24 hours, allow the water to pass for 10 seconds.**

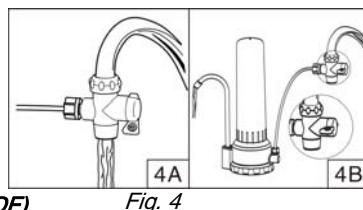


Fig. 4

Step 2:

The cartridge should be cleaned when the output of the purifier is too slow to satisfy your need.

Step 3:

To ensure optimum performance, you should change the cartridge on time.

Attention:

The cartridge life is primarily determined by the quality of the incoming water used and may vary from region to region. The cartridge purifies approx. 10,000 liters, but as water conditions vary, your cartridge may become exhausted prematurely in certain areas and should be replaced earlier. Changing cartridge is recommended after one year.

Cleaning the cartridge



- When the output of the purifier is too slow to satisfy your need, the cartridge should be cleaned:
- 1) Hold the bottom of the purifier, unscrew off (counter–clockwise) the housing and the cartridge.
 - 2) Brush the cartridge using scouring pad (similar to 3M “Scotchbrite”) like picture shown left.
 - 3) Wash the cartridge using water.

4) Reassemble the cartridge and the housing.

Attention:

- ◆ **Ensure that the end of the plastic mount does not come into contact with unfiltered water and dirty hands. Rubber gloves are recommended to be used during cleaning.**
- ◆ **If you have difficulties unscrewing the bottom cap, please do not use any tools. Just use a dry towel to unscrew the cap.**
- ◆ **Move the lever in horizontal position, run the purifier for 5 minutes to flush out any materials residue.**
- ◆ **NEVER use soap or detergents to clean the cartridge.**

Changing the cartridge

The cartridge should be changed when approx. 10,000 liters of water have been purified or the cartridge is broken.

- 1) Unscrew off (counter–clockwise) the housing and the used cartridge.
- 2) Install the new replacement cartridge onto the bottom cap (screw clockwise). Hand tightening is sufficient. Make sure that the original washer is positioned correctly.

Attention:

- ◆ **If you have difficulties unscrewing the bottom cap, please do not use any tools. Just use a dry towel**

to unscrew the cap.

- ◆ **Move the lever in horizontal position, run the purifier for 5 minutes to flush out any materials residue.**

Trouble shooting

Malfunction	Cause/Remedy
Cannot attach the collar to the tap	Determine if you need an adaptor (see Installation).
Water leaks from the connection between the collar and the tap.	1) Ensure that you have tightened collar to tap (DO NOT USE ANY TOOLS). 2) Ensure that the provided washer has been installed. 3) If using an adaptor, ensure that the additional washer is installed at the top of the adaptor.
Water leaks from the connection between the rubber sleeve and the tap.	1) Ensure the bushing of the universal adaptor is fitted properly to your tap, see figs. 2: C1, C4). 2) Ensure the adjusting hoop has been properly tightened.
Water leaks from the connection between the housing and bottom cap.	1) Ensure that the cap has been tightened. 2) Ensure that the original washer has been seated
Purified water drips out of the water outlet even when the tap is turned off.	There is still water under pressure in the Countertop Water Purifier housing when the tap is turned off. It is normal that the purified water flow will continue for a few seconds.
Output of the purifier is too slow	Cartridge should be cleaned (see <i>Cleaning</i>)
After cleaning or changing the cartridge, the output is too slow at first, but become strong a moment later, and purified water drips out from the water outlet even when the tap is turned off.	There is still air in the Countertop Water Purifier housing after cartridge installation. Firstly, to bottom up the Purifier; then unscrew the housing a little and let the water overflow from the interstice (between the bottom and the housing); after that, tighten the housing and stand on end the purifier.

Limited Warranty

Your PUREEASY Countertop water purifier is warranted for six months. Should your PUREEASY Countertop water purifier prove defective within six months from the date of purchase, return it to the PUREEASY retailer from whom it was purchased. PUREEASY, at its discretion, will replace or repair the damaged item. The thread of collar is plastic, the damage of the thread of collar caused by wrong operation is beyond warranty. Ceramic cartridge is breakable, please be careful of storage and use. Damage caused by wrong operation is beyond warranty. Please retain your purchase receipt as proof of date purchased. If you have any questions, please contact PUREEASY at:

+86–20–32058578
sales@pureeasy.com

Items of Pack

Countertop water purifier	1 set
Adaptor	2 piece
Universal adaptor	1 piece
Scouring pad	1 piece
Manual	1 piece