



ENGLISH Owner's Manual

Thank you for choosing PUREEASY patent product. We are confident that you will be satisfied with your PUREEASY Faucet Water Purifier and that it will give you excellent service. To ensure that you will get the best results from your water purifier, please follow the instructions carefully, especially before fitting the PUREEASY Faucet Water Purifier to your tap.

100% diatomite high temperature fired ceramic cartridge and new water purification media of nano-metal clusters can entirely remove parasites, rusts and other suspended contaminants, efficiently remove bacteria, algae, residual chlorine and soluble heavy metal ions in water. Micro-organisms growth and reproduction can be inhibited during the using period. Using PUREEASY Faucet Water Purifier, you can get clean, safe and healthy water for cooking, washing and drinking.

The PUREEASY Faucet Water Purifier has separate outlets for purified and regular water.

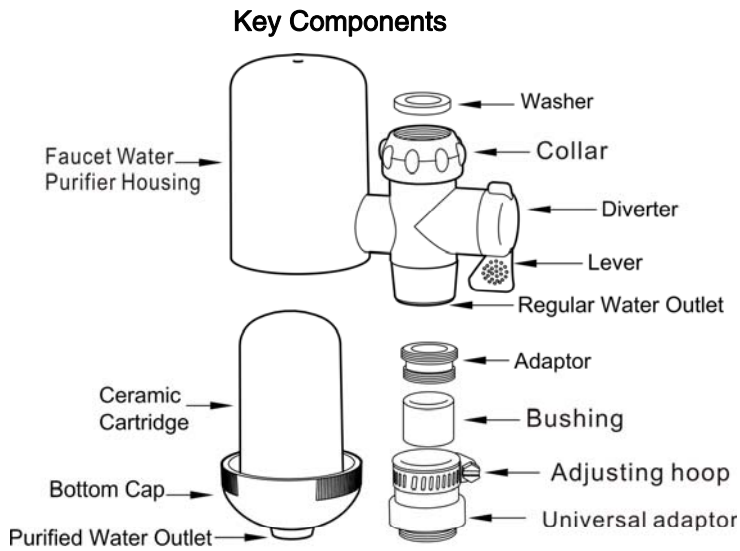


Fig. 1

Installation of the PUREEASY Faucet Water Purifier

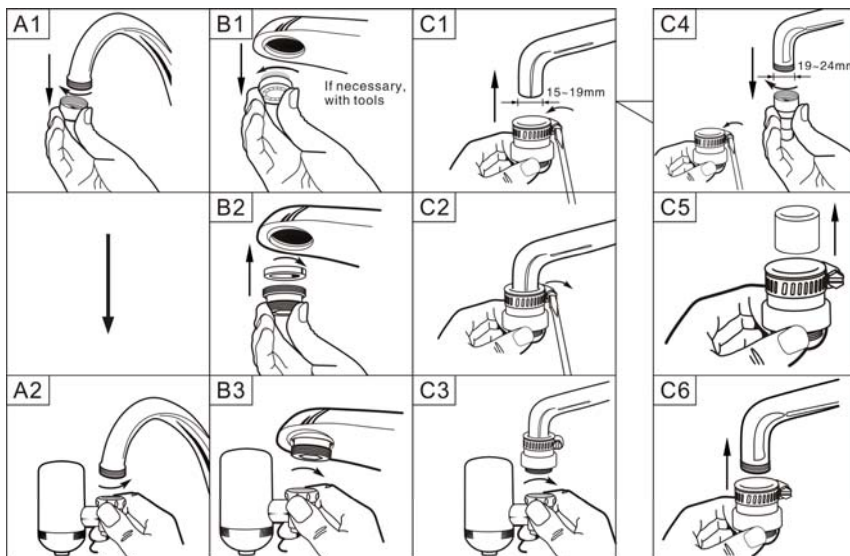
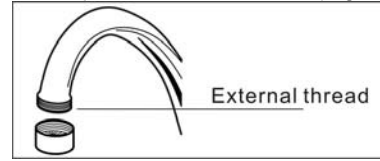


Fig. 2

Attention:

Before you install the water purifier, please determine which type of tap you have (type A, B, or C).

A – Tap with external thread (Figs. 2: A1–A2)

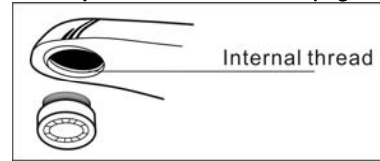


- (1) Remove the existing aerator from the tap.
- (2) If you have a standard tap, screw the collar directly to the tap.

Attention:

- ◆ *The thread of collar is plastic, when fitting collar on the tap, ensure the thread of the collar is properly connected to the thread of your tap. Do not use any tools when attaching the collar to the tap. Hand tighten only.*
- ◆ *Some tap with external thread maybe special, please use the additional universal adaptor.*

B – Tap with internal thread (Figs. 2: B1–B3)

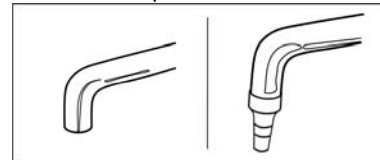


- (1) Remove the existing aerator from the tap, if necessary, with tools.
- (2) Screw the adaptor to the tap and then attach the collar to the adaptor, ensure that the additional washer is installed at the top of the adaptor.

Attention: *Do not use any tools when attaching the collar to the tap. Hand tighten only.*

C – Tap without thread or you don't have a standard tap (Figs. 2: C1–C3)

If your tap has no threads, or you don't have a standard tap, use the additional universal adaptor.



How to attach the universal adaptor to the tap:

- (1) Loosen the screw of the adjusting hoop with a screwdriver as much as necessary to fit the diameter of your tap.

Attention:

Determine if you need take out the bushing of the universal adaptor according to the diameter of your tap: do not need take out between 15–19mm, take out between 19–24mm, see figs. 2: C1, C4).

- (2) Fit the adaptor on your tap.
- (3) Tighten the adjusting hoop with a screwdriver.
- (4) Attach the collar to the adaptor and tighten it. Do not use tools to tighten the collar!

Attention:

Do not use any tools when attaching the collar to the tap. Hand tighten only. A screwdriver is required only for fixing the universal adaptor to the tap.

Using the PUREEASY Faucet Water Purifier

Step 1:

The PUREEASY Faucet Water Purifier has separate outlets for purified and regular water. When the diverter lever is vertical, the water will come directly out of the regular port (see Fig. 3A)

To get purified water, move the lever in horizontal position, purified water will come out of the purified port (see Fig. 3B)

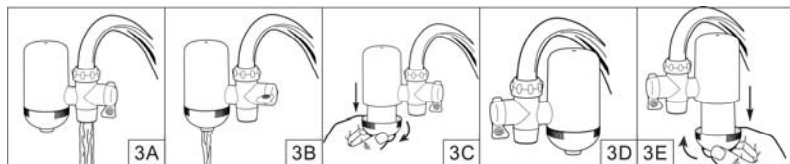


Fig. 3

Attention:

◆ *The ceramic cartridge is filled with Nano-metal clusters media. Output maybe opalescent because of air bubble at the first time use. This is a normal effect and does not influence the performance of your water purifier. Run the purifier for 1 minute to flush out any materials residue. Please repeat this process with every new cartridge. Either use the purified water for your plants or discard it.*

◆ *If the PUREEASY Faucet Water Purifier has not been used for more than 24 hours, allow the water to pass for 10 seconds.*

Step 2:

The cartridge should be cleaned when the output of the purifier is too slow to satisfy your need.

Step 3:

To ensure optimum performance, you should change the cartridge on time.

Attention:

The cartridge life is primarily determined by the quality of the incoming water used and may vary from region to region. The cartridge purifies approx. 5,000 liters, but as water conditions vary, your cartridge may become exhausted prematurely in certain areas and should be replaced earlier. Changing cartridge is recommended after three to six months.

Cleaning the cartridge

When the output of the purifier is too slow to satisfy your need, the cartridge should be cleaned:

- 1) Unscrew the bottom cap of the purifier (Fig.3C).
- 2) Brush the cartridge using green pad or waterproof abrasive paper.
- 3) Wash the cartridge using water.
- 4) Screw the bottom cap onto the housing.

Attention:

◆ *If it's difficult to operate, Please revolve Faucet Water Purifier 180° (Figs. 3D-3E).*

◆ *If you have difficulties unscrewing the bottom cap, please do not use any tools. Just use a dry towel to unscrew the cap.*

◆ *Do not use any chemical detergent to clean the cartridge.*

Changing the cartridge

The cartridge should be changed when approx. 5,000 liters of water have been purified or the cartridge is broken.

- 1) Screw off (counter-clockwise) the bottom cap with the replaced cartridge from housing (Fig. 3C)..
- 2) Install the new replacement cartridge by screwing the bottom cap onto the housing (screw clockwise). Hand tightening is sufficient. Make sure that the original washer is positioned correctly.

Attention:

◆ *If it's difficult to operate, loosen the collar and revolve Faucet Water Purifier 180° (Figs. 3D-3E).*

◆ *If you have difficulties unscrewing the bottom cap, please do not use any tools. Just use a dry towel to unscrew the cap.*

◆ *Move the lever in horizontal position, run the purifier for 1 minute to flush out any materials residue.*

Trouble shooting

Malfunction	Cause/Remedy
Cannot attach the collar to the tap	Determine if you need an adaptor (see Installation).
Water leaks from the connection between the collar and the tap.	1) Ensure that you have tightened collar to tap (DO NOT USE ANY TOOLS). 2) Ensure that the provided washer has been installed. 3) If using an adaptor, ensure that the additional washer is installed at the top of the adaptor.
Water leaks from the connection between the rubber sleeve and the tap.	1) Ensure the bushing of the universal adaptor is fitted properly to your tap, see figs. 2: C1, C4). 2) Ensure the adjusting hoop has been properly tightened.
Water leaks from the connection between the housing and bottom cap.	1) Ensure that the cap has been tightened. 2) Ensure that the original washer has been seated
Purified water drips out of the water outlet even when the tap is turned off.	There is still water under pressure in the Faucet Water Purifier housing when the tap is turned off. It is normal that the purified water flow will continue for a few seconds.
Output of the purifier is too slow	Cartridge should be cleaned (see <i>Cleaning</i>)
Purified water rate increase, but no cartridge cleaning	The cartridge is broken, please change new cartridge

Limited Warranty

Your PUREEASY faucet water purifier is warranted for six months. Should your PUREEASY faucet water purifier prove defective within six months from the date of purchase, return it to the PUREEASY retailer from whom it was purchased. PUREEASY, at its discretion, will replace or repair the damaged item. The thread of collar is plastic, the damage of the thread of collar caused by wrong operation is beyond warranty. Ceramic cartridge is breakable, please be careful of storage and use. Damage caused by wrong operation is beyond warranty. Please retain your purchase receipt as proof of date purchased. If you have any questions, please contact PUREEASY at:

+86-20-32058578
sales@pureeasy.com

Technical Specification

Output:	≥6L/min at 0.2MPa
Cartridge Capacity:	Approx. 5,000 liters (depending on water quality)
Working Pressure:	0.1~0.35MPa
Weighth:	Approx. 190g
Dimensions:	10.8 × 5.2 × 10.5cm
Material:	ABS Plastic, Ceramic, Nano-metal clusters (Nano-KDF) media

Items of Pack

Faucet water purifier	1 set
Adaptor	1 piece
Universal adaptor	1 piece
Manual	1 piece